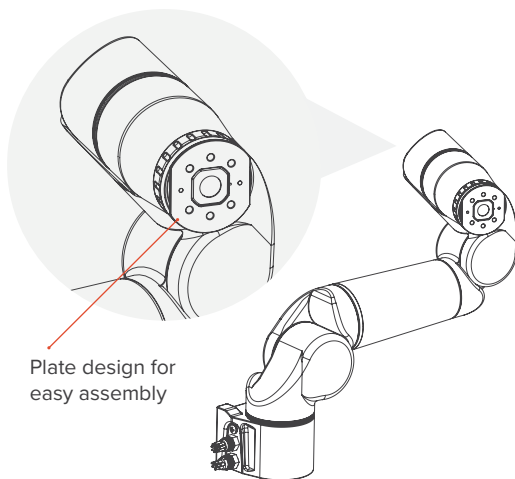
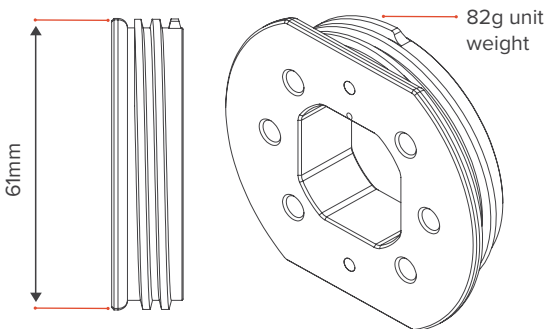
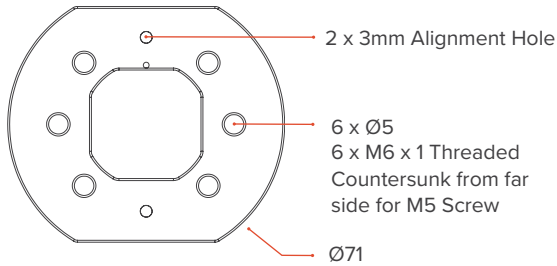


# PAYLOAD INTERFACE

A versatile interface to attach custom parts to Bravo manipulators

Securely attach your sonar, probe or other sensor to your Bravo manipulator



## INTERFACING MADE EASY

The Payload Interface add-on allows attachment of external sensors and tools to Reach Bravo manipulators. Replacing the jaws at the end-effector, the plate design makes it easy for developers to securely integrate their own payloads to the manipulator system.

### FEATURES

- 2 x 3mm Dowel Pin Holes for accurate alignment
- Connection options for a variety of mounting requirements:
  - 6 x M6 fasteners threaded into the plate
  - 6 x M5 / #10 Countersunk bolts from far side

A **Revolution** for Subsea Inspection & Intervention



Responsive  
Integration Support



Responsive  
Remote Support



12 Month  
Warranty



Ext. Warranty, Spares  
Packages & Service Plans  
Available



1000+ Hours  
Logged