

ALPHA 5

The worlds' smallest, lightest, five-function subsea manipulator

The Alpha 5 is a tough and reliable multi-function electric manipulator for harsh environments.

- **TOUGH**
300m Depth Rating
Field Proven
- **USABLE**
Intuitive Interface
Master Arm Controlled
- **ADVANCED**
0.1° Joint Accuracy
Kinematics and Self-Protection

Master Arm
Controller Enabled

Note: Master Arm not included



FEATURES

- Fits on very light ROVs
- Quick to integrate
- End-effector interchangeable
- Embedded controllers - no additional POD
- Adjustable grab force - pick up a sea urchin or cut a cable
- Self-protection against collision
- One-click home position
- Corrosion and scratch resistant anodized aluminium
- Highly Modular and Configurable - 3, 4 or 5 function versions available



All Electric

BE CONFIDENT

With high accuracy joint positioning (0.1°) and a master/slave topside controller, the Alpha 5 is the most advanced manipulator for the portable ROV community. A must for operators in the new era of close inspection work and complex intervention.

ROV Proven



Mission Specific End-Effectors | Interchange With Ease



RA-1018



RA-1011



RA-1070



RA-1014



RA-1012



RA-1017



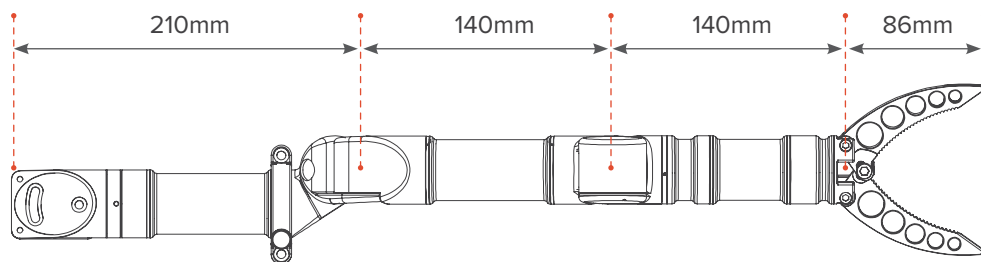
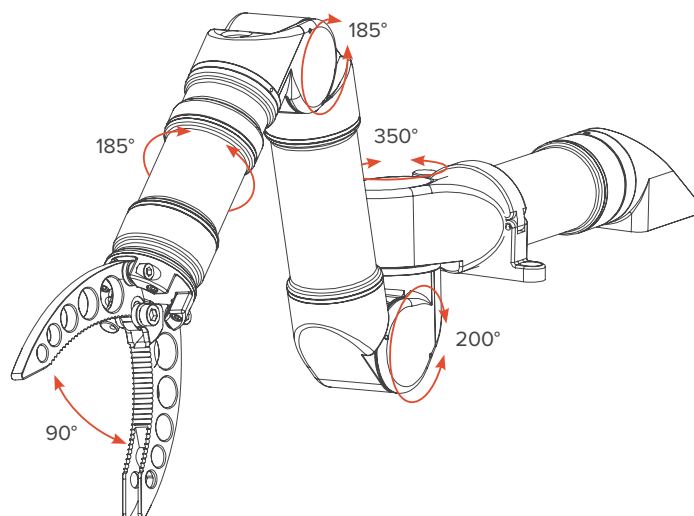
RA-1037



RA-1048

SPECIFICATIONS

Max Closing Force	600N (60kg)
Push-rod axial load rating	1kN (100kg)
Reach	400mm
Outer Diameter	40mm
Standard Connector	Teledyne 6 Pin IE(W)-55 Impulse Connector (whip included)
Operator Control Options	3D Space Mouse, Gamepad, Software GUI, Master Controller
End-Effector Options	Quad Jaws, Pincer, Parallel Jaws, Rope Cutter



ELECTRICAL

Voltage	18-30V
Wattage	35W Max
COMS	RS232/485

ENVIRONMENTAL

Depth	300MSW
Temp	-35°C to 35°C
Material	AL6061

MECHANICAL

Lift Capacity	2000g (Full Reach)
Weight (Air)	1360g
Weight (Water)	900g

HIGH MOBILITY & COMPACT

TOP VIEW

Note: base joint is software limited to 352° (not continuous)

400mm Max Reach

SIDE VIEW