



Prototyping deck

SKU: 114990115

The Crazyflie™ Prototyping deck allows you to add a prototyping area to your Crazyflie 2.X and lift your electronics into the air. Just solder directly on the expansion board and plug it to the expansion port.



1. Introduction

The Prototyping deck has special pads to make it easier to solder, bridge and prototype new functionality. The deck also has a footprint where a 1-wire memory could be soldered to make the board auto-detectable by the firmware.

All the soldering pads are spaced with 2.54 mm.

2. Features

- Soldering pads support both through hole and SMD components
- Has SOT-23 footprint for 1-wire memory used for automatic detection (not mounted)

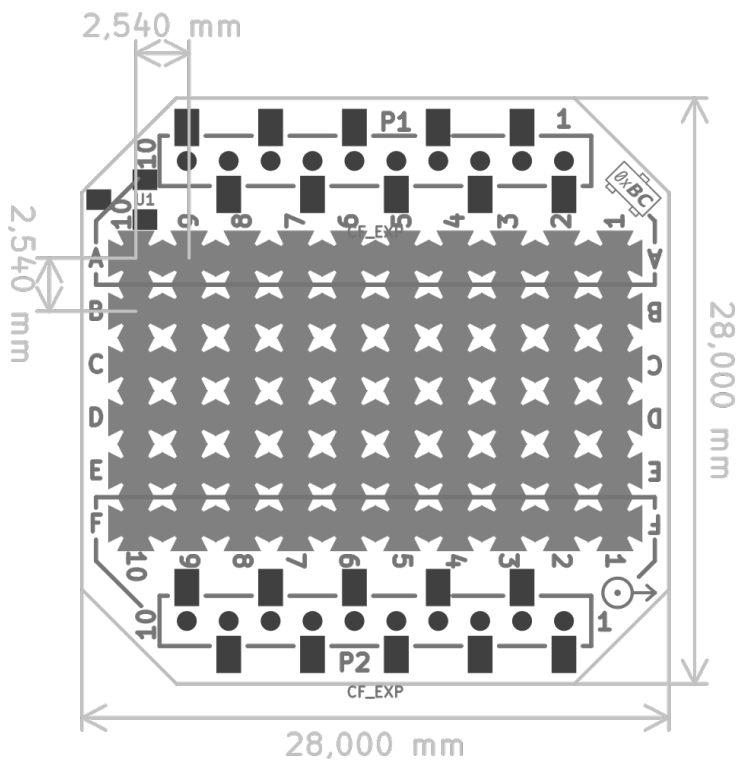
3. Electrical specification

- Makes all 20 pins in the Crazyflie 2.X expansion port available
- 40 pads for prototyping (supporting both through hole and SMD components)
- Footprint for optional 1-wire memory (not mounted)

4. Mechanical specifications

- Weight: 1.5 g
- Size (BxHxW): 28x28x4mm
- Designed for mounting above or under the Crazyflie 2.X

5. Mechanical drawing



6. Package contents

- 1 x Prototyping deck

7. Errata

8. Hardware revisions

Revision	Comment
C1	Updated screenprint from bitcraze.se to bitcraze.io
C	Adjusted expansion connector footprint for production
B	Initial release

9. History

Version	Comment	Date
1	Initial release	2020-04-01