

Probe Pipe Fitting

V 1.7

The pipe fitting and PVC Tee comes in two different sizes

- 3/4" NPT
- 1/2" NPT

Both sizes are compatible with all laboratory size probes.
Each kit comes with one pipe fitting and one PVC Tee.

Materials of construction (pipe fitting)

- Body: Black Polypropylene
- Nut & Spacers: Black Polypropylene
- Grab Ring: 302 Stainless Steel

Materials of construction (O-ring)

- O-ring: Buna-n
- Inner Diameter: 17mm
- Outer Diameter: 12mm
- Thickness: 2.5mm

Materials of construction (PVC-Tee)

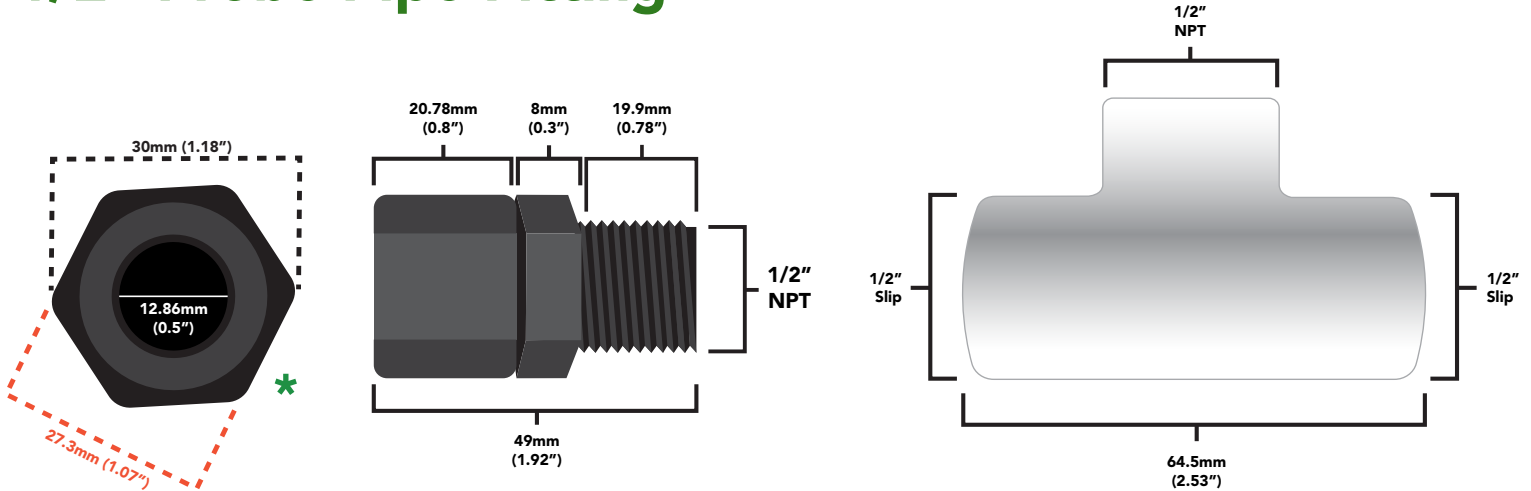
- Schedule 40 PVC
- Food Safe
- Max Pressure: 689.47 kPa (100 psi) 6.89 bar
- Max temperature: 100 °C (212°F) 373.15 °K

3/4" option

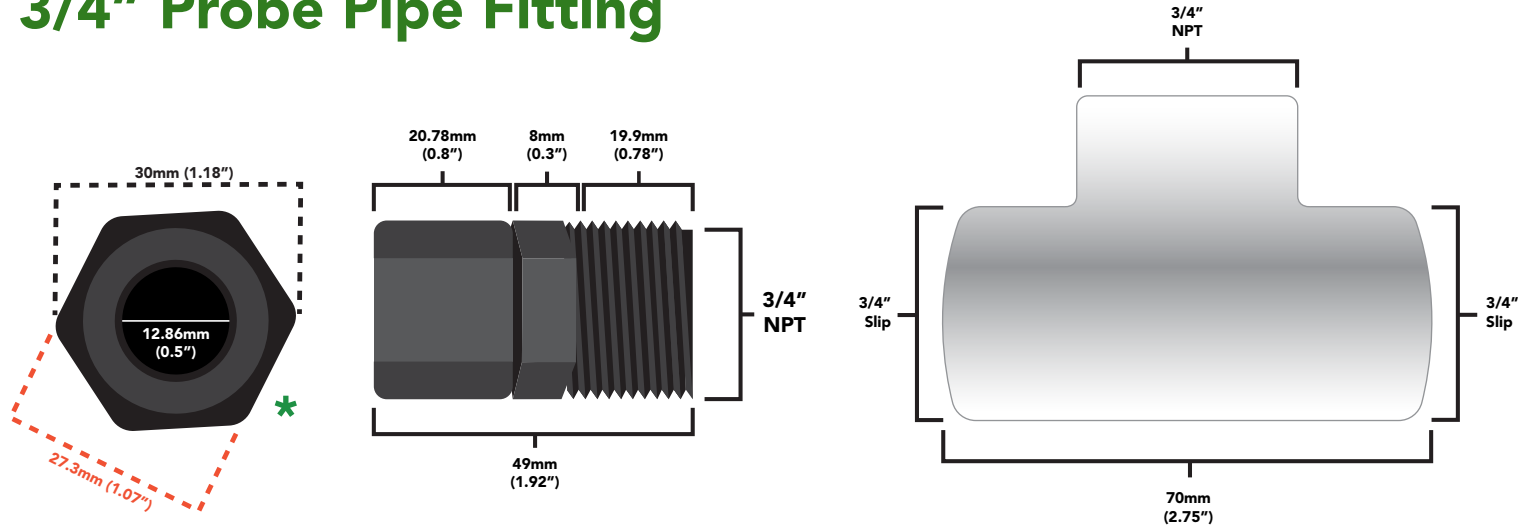
1/2" option



1/2" Probe Pipe Fitting

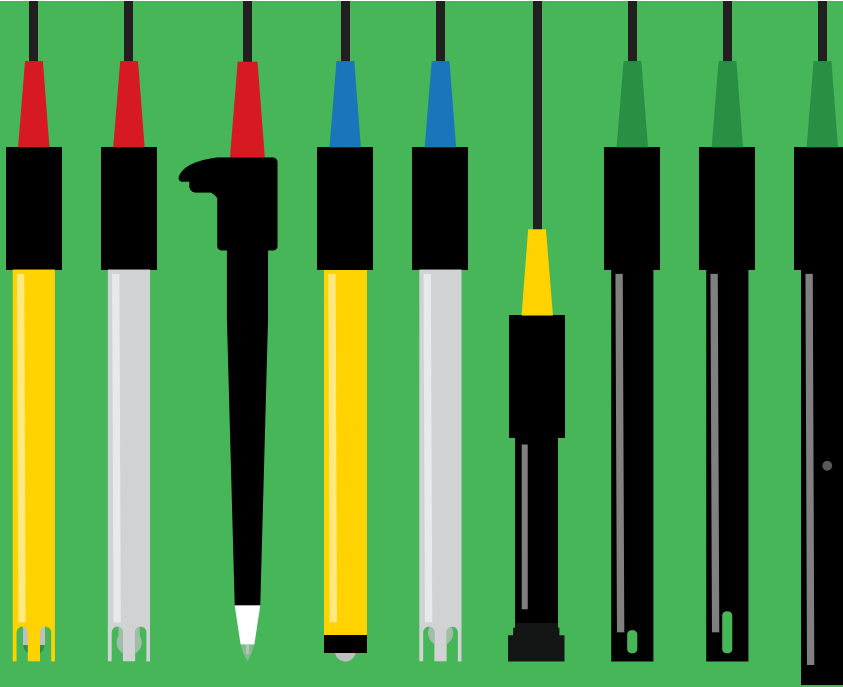


3/4" Probe Pipe Fitting



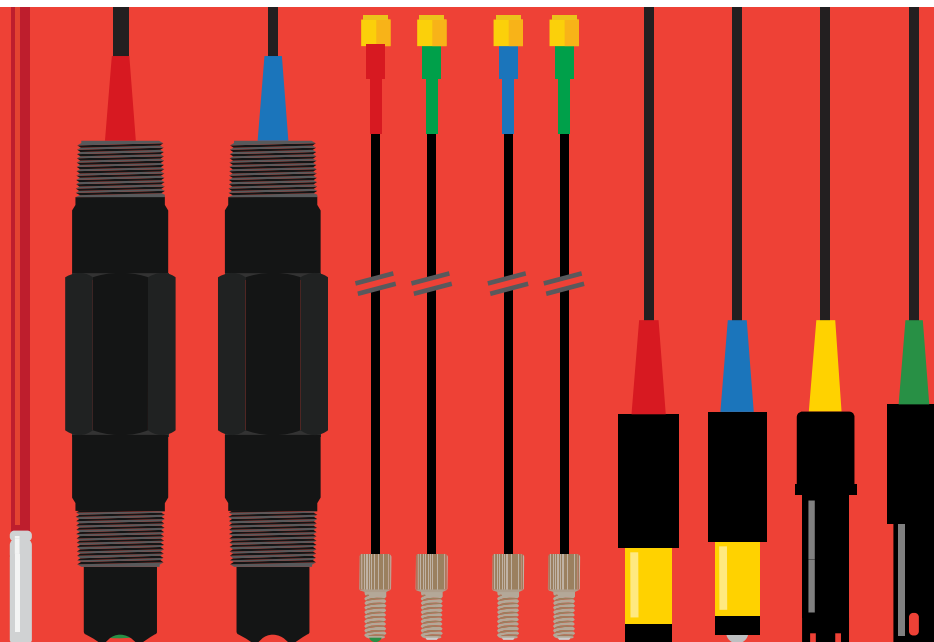
***Both the 1/2" and 3/4" pipe fittings accommodate the same probes.
The size difference is just to accommodate different PVC pipe sizes.**

Compatibility Chart



laboratory size probes

Lab Grade pH probe
Consumer Grade pH probe
Spear Tip pH probe
Lab Grade ORP probe
Consumer Grade ORP probe
Dissolved Oxygen probe
Conductivity K 0.1 probe
Conductivity K 1.0 probe
Conductivity K 10 probe



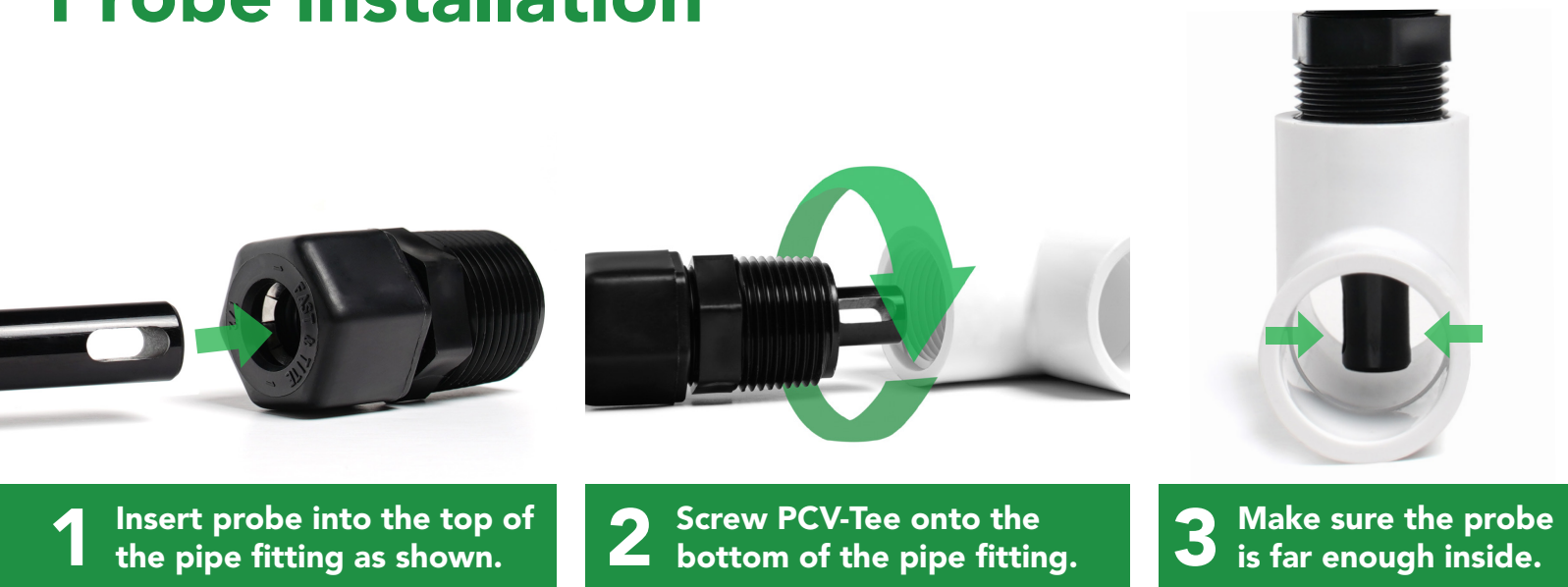
non-laboratory size probes

PT-1000 Temperature probe
Industrial pH probe
Industrial ORP probe
Micro pH probe
Micro ORP probe
Mini pH probe
Mini ORP probe
Mini Dissolved Oxygen probe
Mini Conductivity K 1.0 probe





Probe installation



Installation complete!

Installing a Dissolved Oxygen probe



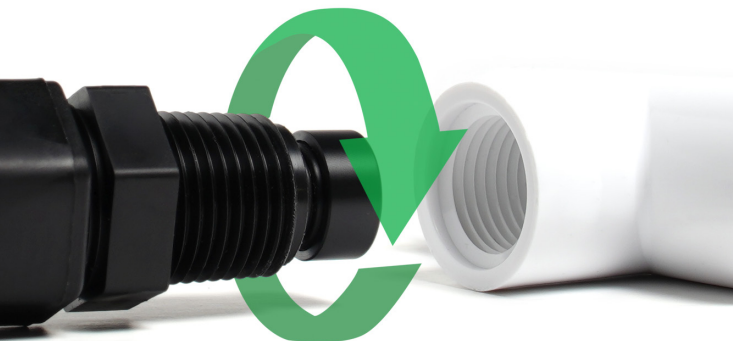
1 Hold the probe upside down, and unscrew the membrane cap.



2 Slide the pipe fitting down onto the probe as shown.



3 Screw the membrane cap back onto the probe.



4 Screw PCV-Tee onto the bottom of the pipe fitting.



5 Depending on which size you have (3/4" or 1/2"), the bottom of the probe may or may not protrude into the PVC-Tee.