

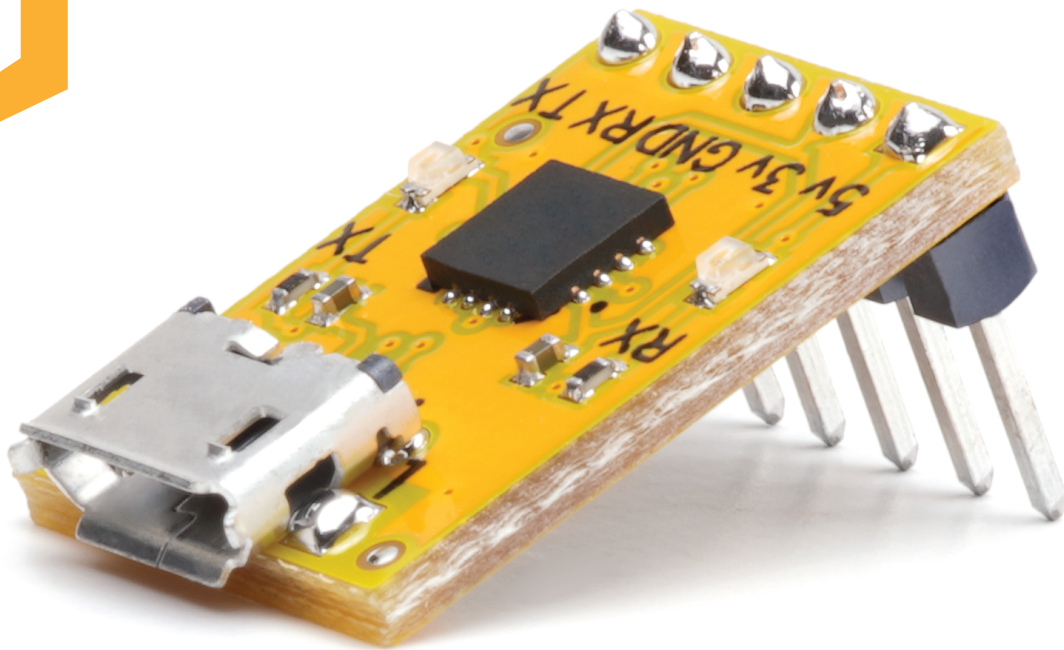
## Basic USB to Serial Converter

Revised 10/21

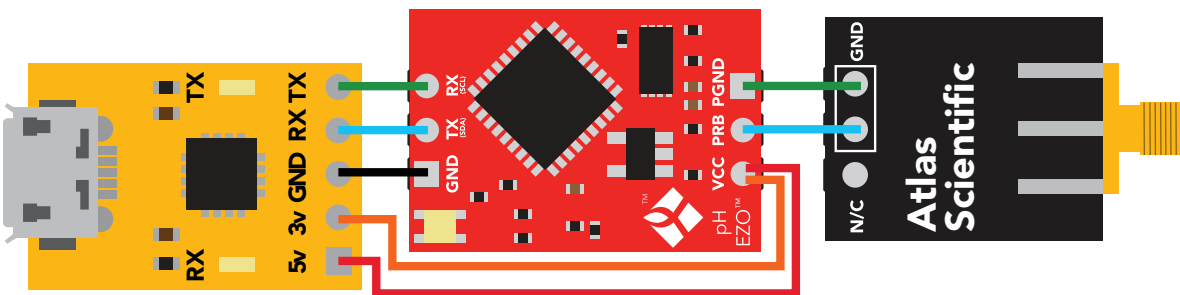
# Basic USB to Serial Converter

### V 1.4

This is an evolving document check back for updates.



How to connect an Atlas Scientific™ Basic USB to Serial Converter.



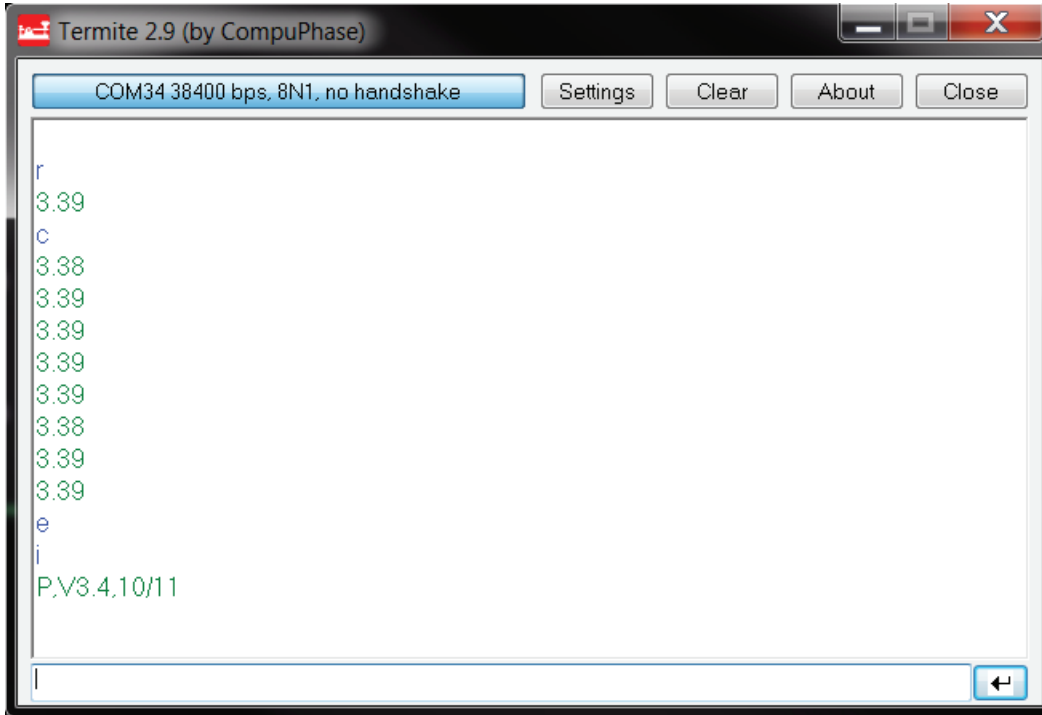
Header pins have a 1mm diameter

\*Users Choice: 3.3v or 5v

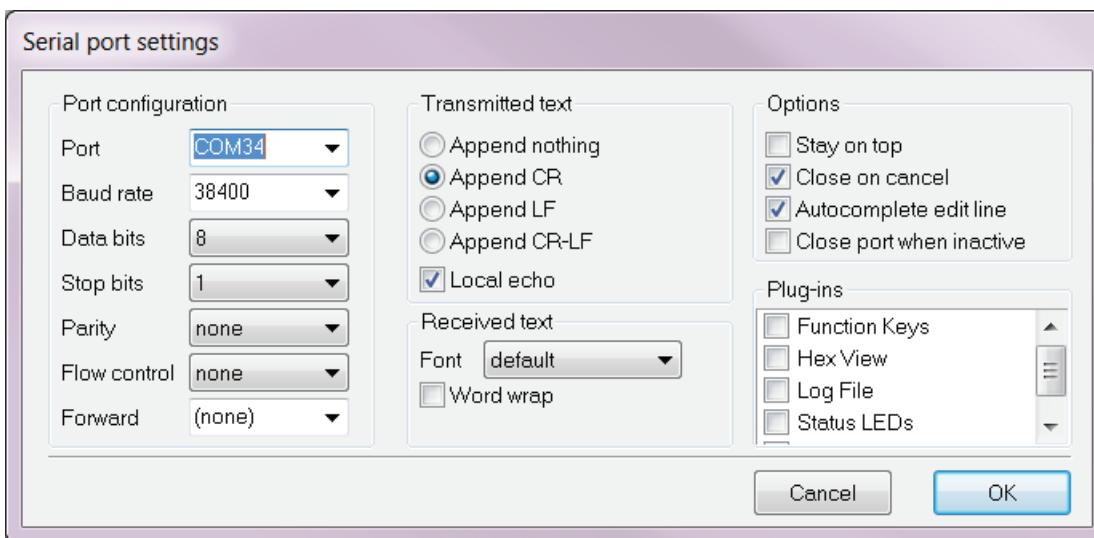
# AtlasScientific™

Environmental Robotics

## Basic USB to Serial Converter



Example of Termitte (terminal emulator).



**Port:** Choose the COM port that is installed when connecting the Basic USB to Serial Converter.



TM