

AGIBOT G2 Quick Start Guide

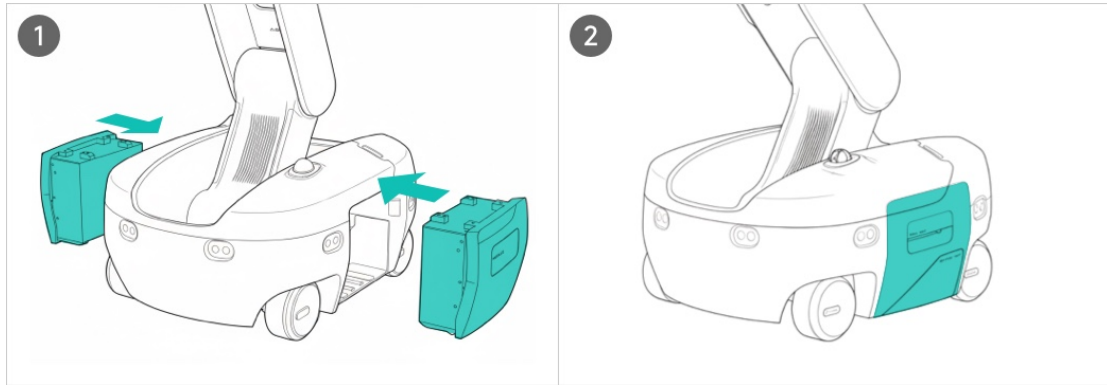
Updated Log

Time	Version	Updated Log
20250821	0.10	<ul style="list-style-type: none">Initial Setup.
20251005	0.11	<ul style="list-style-type: none">Completed basic version.
20251007	0.12	<ul style="list-style-type: none">Updated instructional videos.
20251022	0.13	<ul style="list-style-type: none">Updated UI.
20260202	0.14	<ul style="list-style-type: none">Updated technical illustrations.
20260214	0.15	<ul style="list-style-type: none">Added requirement to turn on chassis power before charging.Added warning: Hot-plugging is not supported for wireless terminals.Included detailed functional description for Emergency Stop procedures.

Welcome to use AGIBOT G2. This chapter is a Quick Start Guide designed to help you quickly power on and operate AGIBOT G2. For detailed instructions, please refer to the related chapters in the user manual.

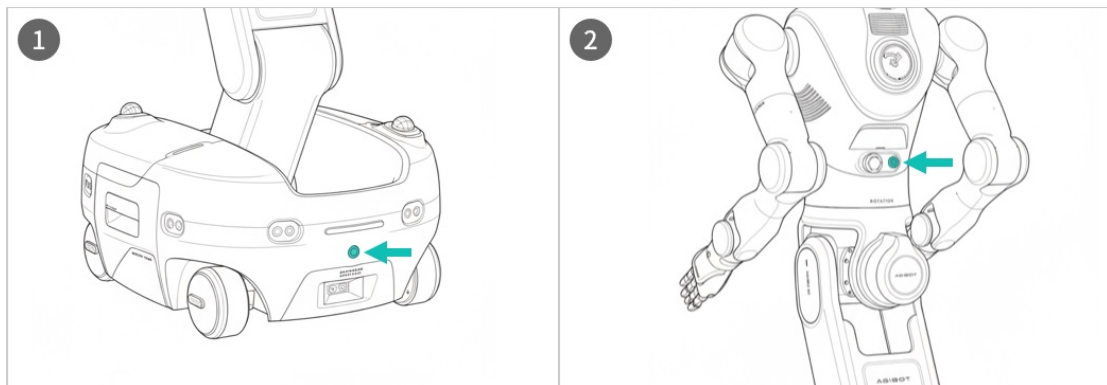
Battery Installation

1. There are grooves for battery installation on both sides of the robot chassis.
2. Insert the fully charged battery into the battery compartment and push it in as far as possible until the battery surface is flush with the robot body surface.



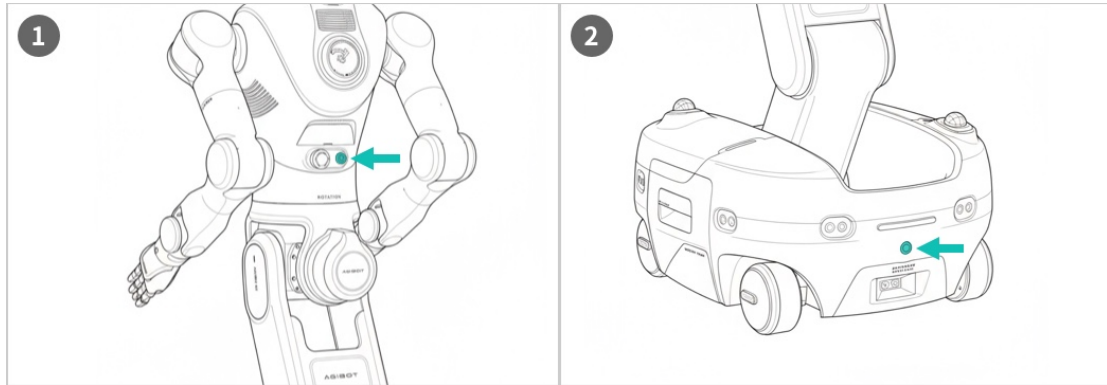
Power-On Procedure

1. If the robot is not powered on, press the Main Power Switch at the rear of the robot chassis to power it on; the button will light up once powered on.
2. Press the Power button on the robot's waist; it will illuminate once the system starts up.



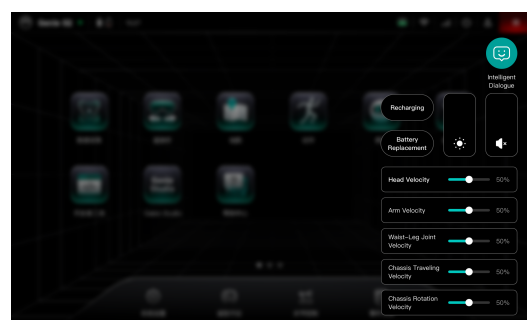
Shutdown Procedure

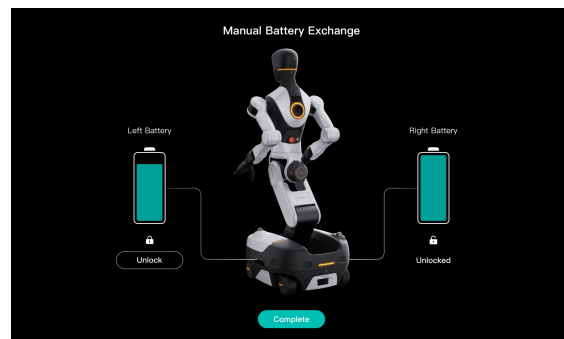
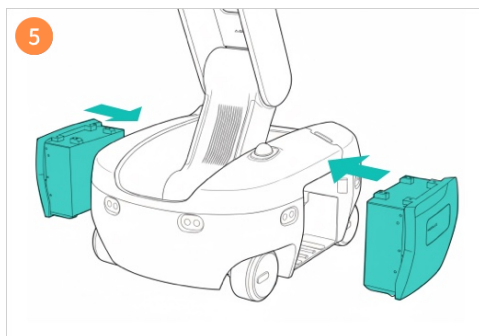
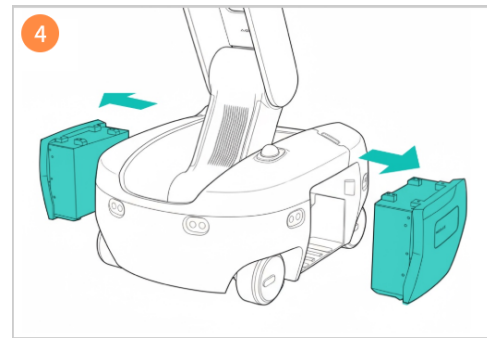
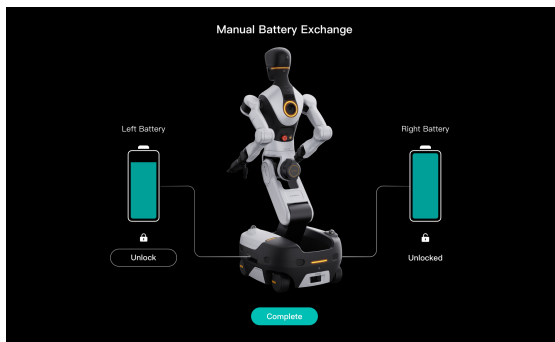
1. Press and hold the Power button on the robot's waist for 5 seconds and then release it; robot system will initiate the shutdown process and power off automatically after a short while.
2. For long-distance transportation or storage for more than 3 days, press the Main Power Switch on the robot chassis to cut off the power supply to the entire robot.



Battery Replacement in Power-On State

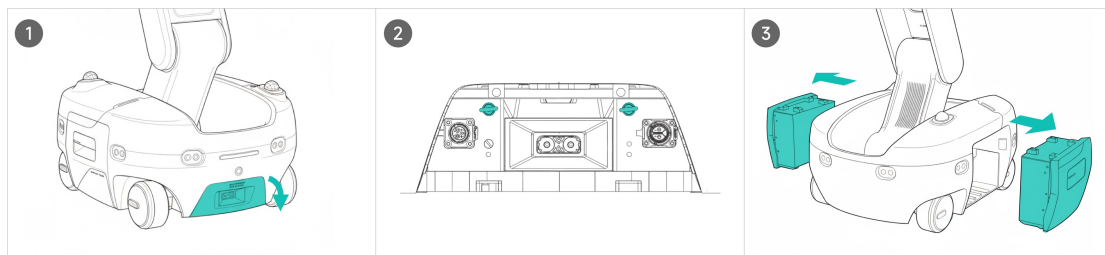
1. When the robot is powered on, open the Quick Menu from the status bar of the robot's wireless terminal.
2. Tap the Battery Replacement button in the Quick Menu to open the battery replacement interface.
3. Tap the Unlock button to release the battery lock.
4. Pull out the unlocked battery gently.
5. Insert the replacement battery into the battery compartment and push it in as far as possible until the battery surface is flush with the robot body surface.
6. Tap Finish at the bottom of the interface to exit the battery replacement interface.





Battery Replacement in Power-Off State

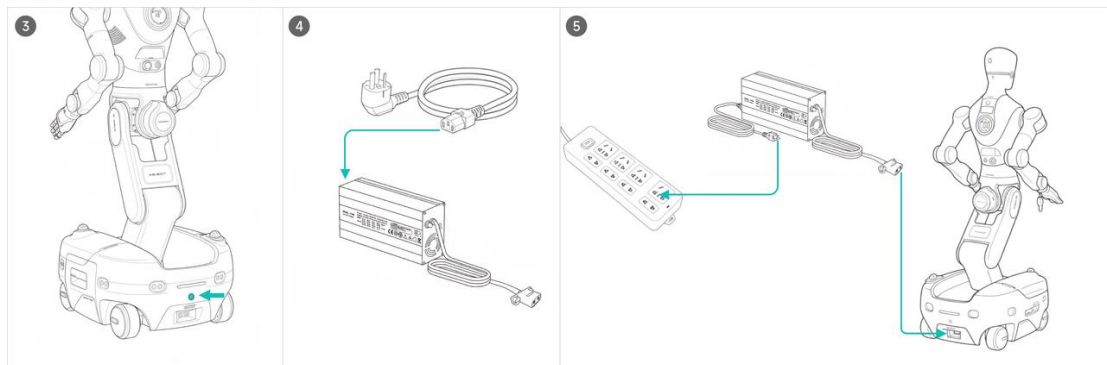
1. Pull down the white cover at the robot's rear to open the chassis maintenance compartment.
2. Pull the rings on the left and right sides of the upper part of the maintenance compartment to unlock the battery.
3. Manually pull out the battery from the robot and replace it with a new one. Push it in as far as possible until the battery surface is flush with the robot body surface.



Robot Charging

1. The robot Main Power Switch must be turned on to begin charging.
2. Verify the power status by checking the Main Power Switch located at the rear of the chassis. If the light is on, the robot is powered on.
3. If the light is off, press the Main Power Switch once to turn it on.
4. Plug the AC power cord into the power adapter.
5. Plug the AC cord into an outlet, then connect the output end of the power adapter to the charging port at the rear of the robot.

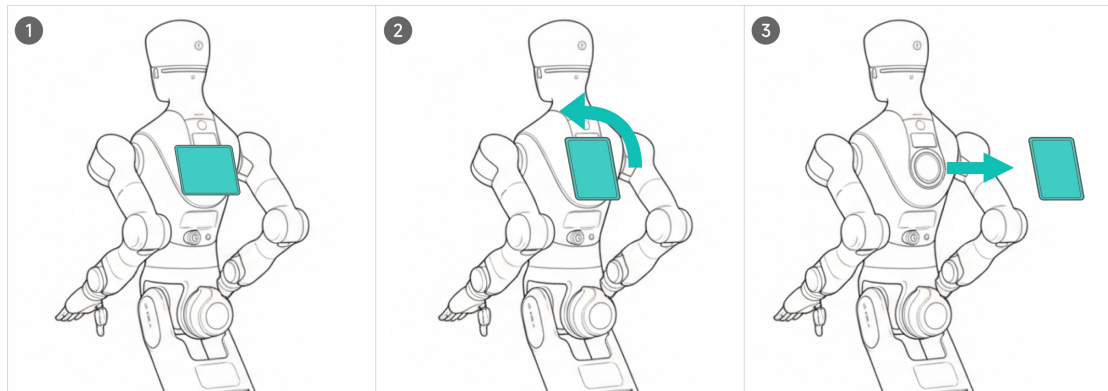
Ensure the robot is powered on; otherwise, it will not charge.



Wireless Terminal Disconnection

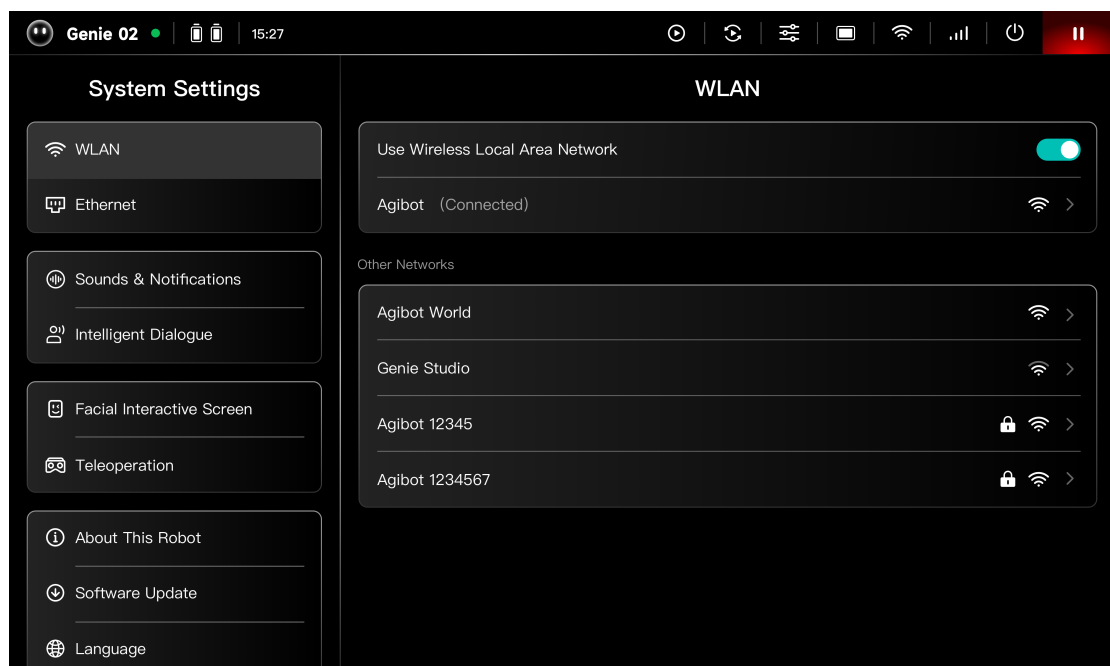
1. The wireless terminal is installed on the robot's back at the factory.
2. Rotate the wireless terminal 90 degrees counterclockwise to unlock the connecting latch.
3. Pull the wireless terminal backward to remove it; the terminal can maintain a wireless connection with the robot within a certain distance.

Note: The current version does not support the installation or removal of wireless terminals while the device is powered on. Please perform this operation only when the device is shut down and the power supply is completely disconnected.



Robot Wi-Fi Connection

1. When the robot is powered on, tap the Wi-Fi icon on the status bar of the robot's wireless terminal.
2. The system will automatically open the System Settings app and navigate to the Wi-Fi page.
3. Select the network to be connected and enter the password to connect.



Emergency Stop (E-Stop)

In the event of an emergency, the robot can be stopped using two methods: "Soft E-Stop" and "Hard E-Stop."

- Soft E-Stop: Stops the robot via software commands. While it can be triggered

remotely and offers a faster recovery time, it is generally less reliable than a Hard E-Stop.

- Hard E-Stop: Stops the robot by physically cutting power to the actuators. This is the most reliable method for immediate safety.

Soft E-Stop Instructions

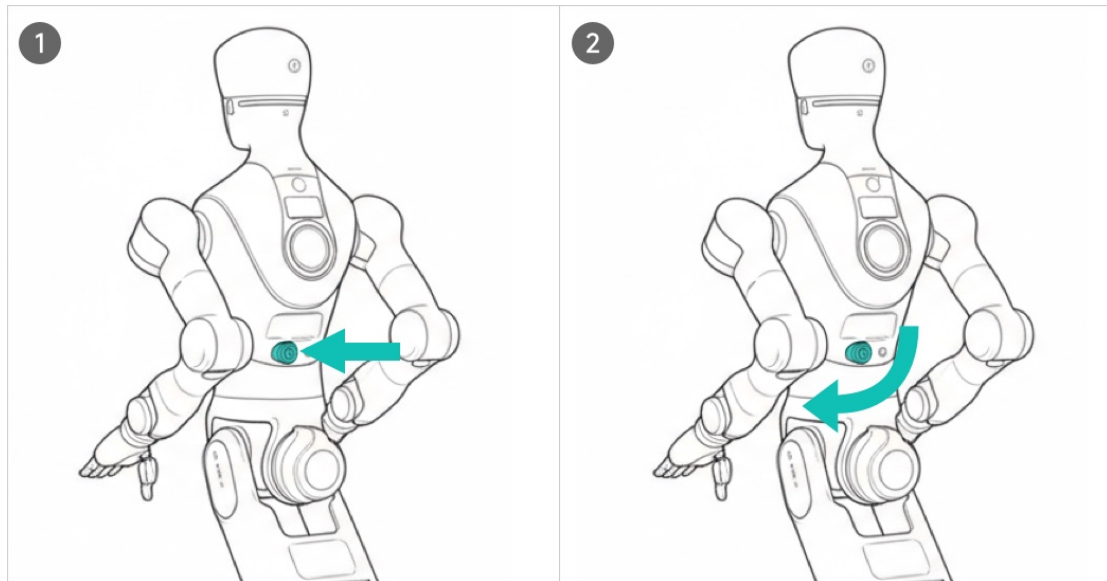
1. To Stop: Tap the "Soft E-Stop" button located in the upper-right corner of the wireless terminal.
2. To Resume: Once the situation is safe, tap the button again to release the stop. The robot will then be ready to resume operation.



Hard E-Stop

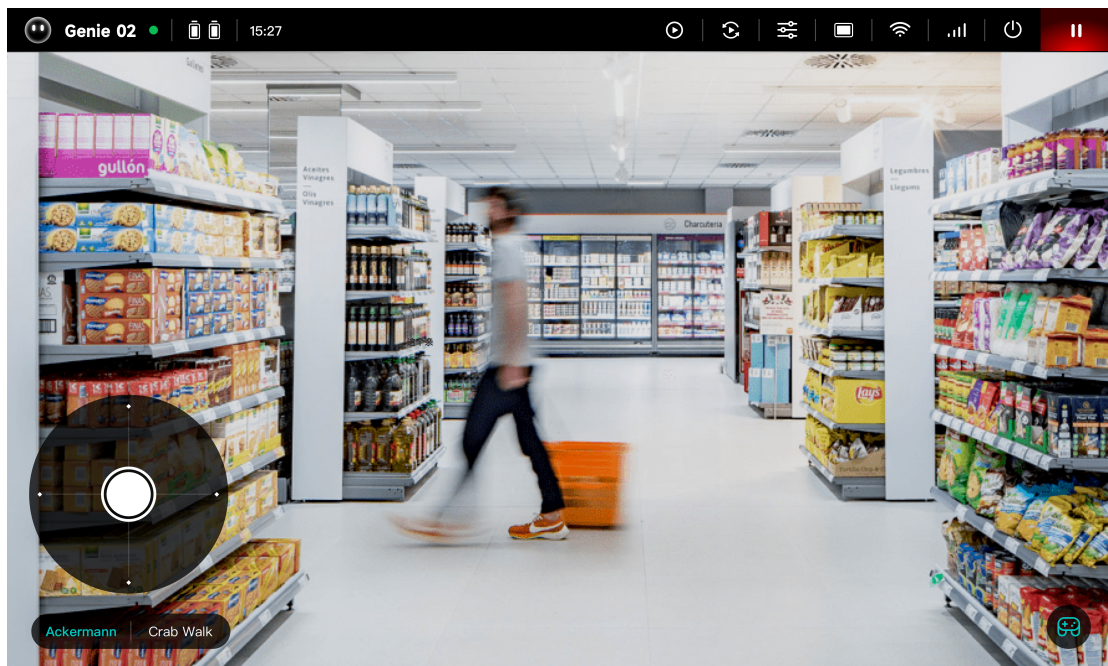
1. To Stop: Press the Emergency Stop (E-Stop) button located on the back of the robot next to the power button.
2. To Resume: Once the robot has stopped and the area is safe, rotate the button clockwise to release the stop.

Note: Please be aware that recovering from a Hard E-Stop may take several minutes to complete.



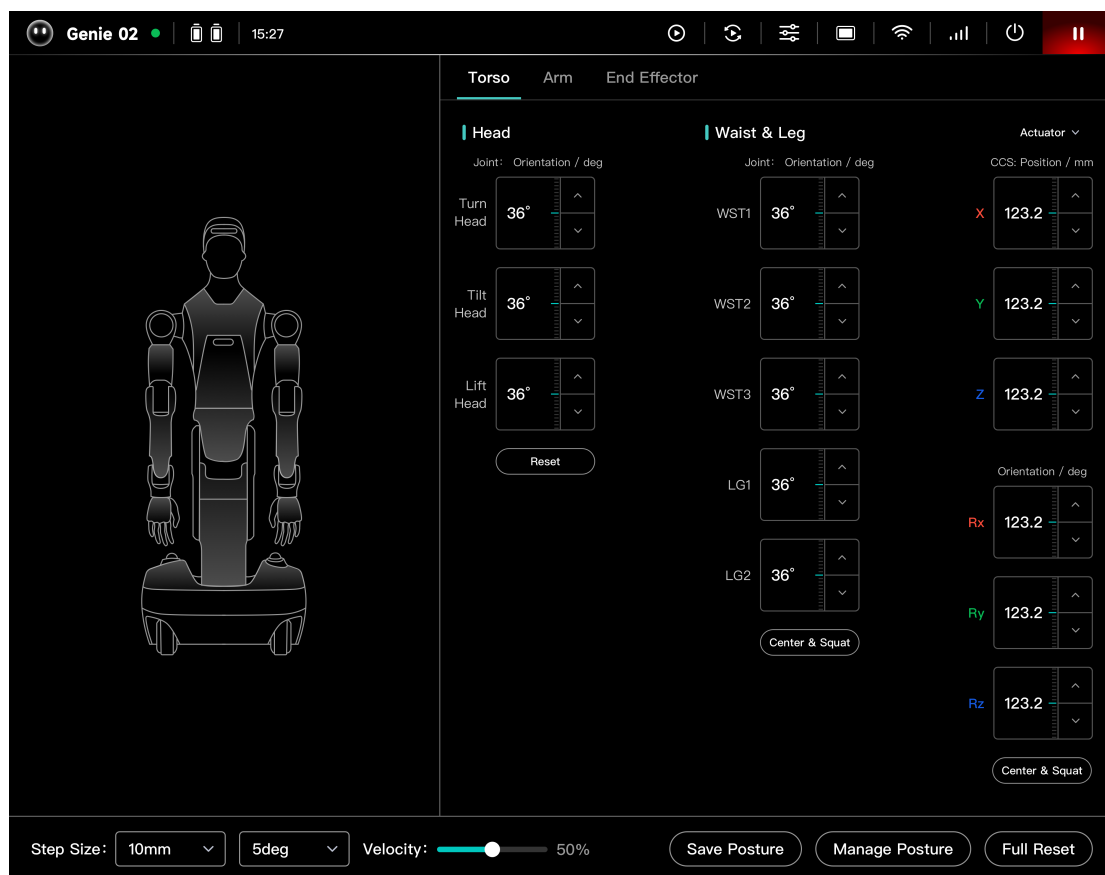
Chassis Control

1. When the robot is powered on, tap Chassis Control in the Dock bar at the bottom of the wireless terminal.
2. At the bottom of the Chassis Control app, switch movement modes via the buttons . The robot supports two movement modes: Ackermann and Crab Walk.
3. Use the virtual joystick to control the robot's chassis movement.



Joint Control

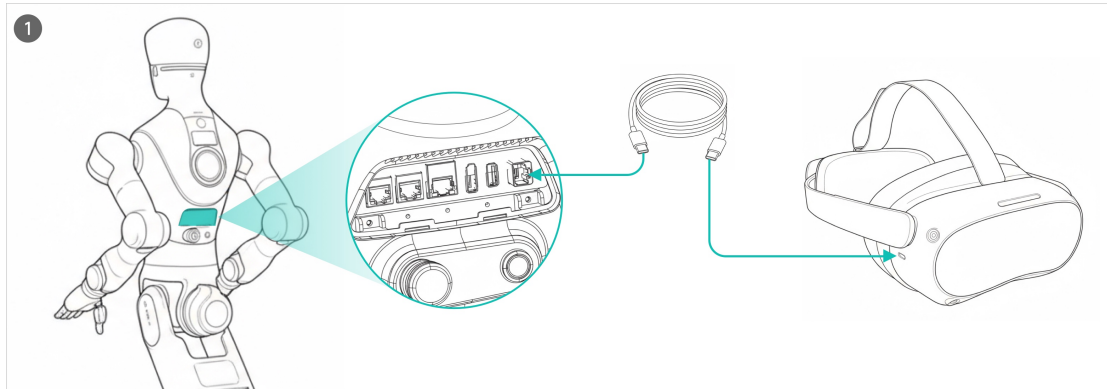
1. Tap Joint Control on the Dock bar at the bottom of the wireless terminal to open the Joint Control app.
2. Tap the top of the interface to switch the object to be operated.
3. Tap the bottom of the interface to switch the step size of joint movement during jog control.
4. Drag the slider at the bottom of the interface to adjust the robot's speed in remote control mode.
5. Joint control: Tap the up and down buttons corresponding to the joints to adjust the joint positions.
6. Tap the Reset button at the bottom to reset the overall posture of the robot.



Teleoperation Connection

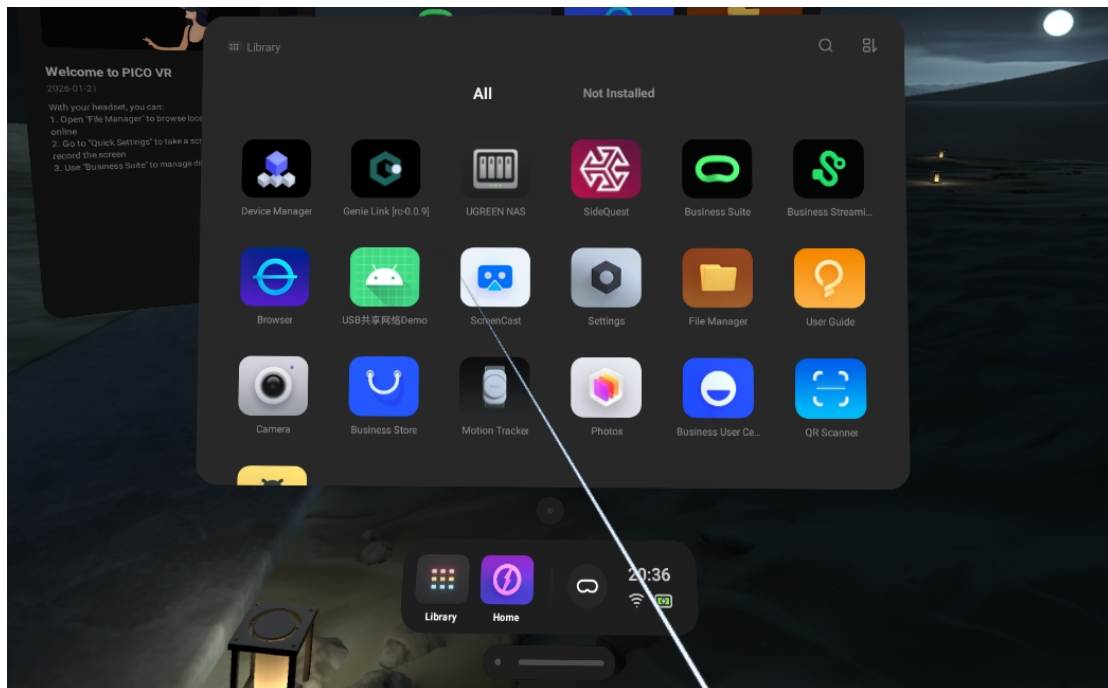
Wired Connection

1. Open the maintenance compartment on the robot's back.
2. Connect the VR headset to the robot using a USB-C cable.

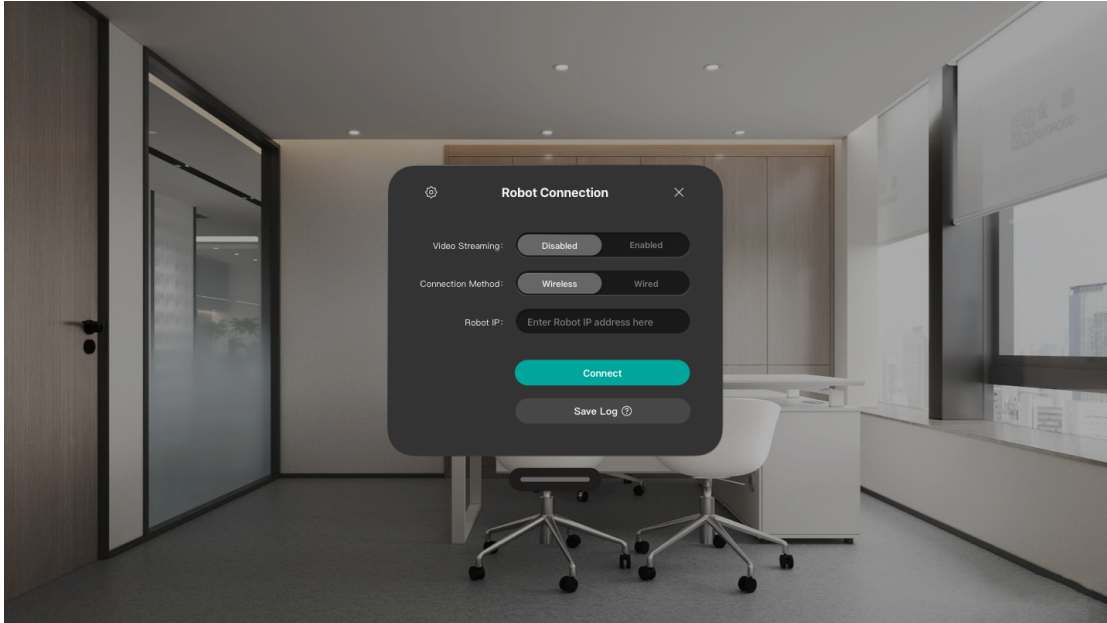


Establish Connection

1. Open the Genie Link app inside the VR headset.
2. On the connection interface of Genie Link, select No Image Transmission and Wired Connection, then tap Connect.
3. A pop-up notification showing Connection Successful indicates that the connection is established.



“Genie Link” APP



Teleoperation Connection

Button Layout

