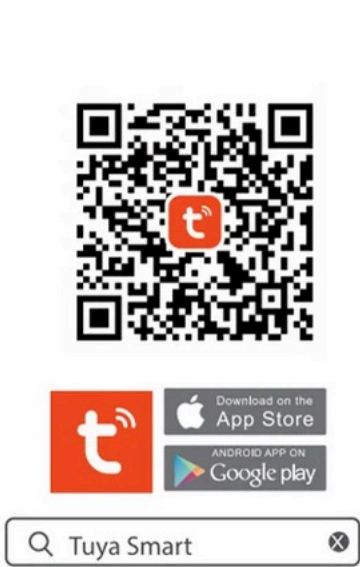
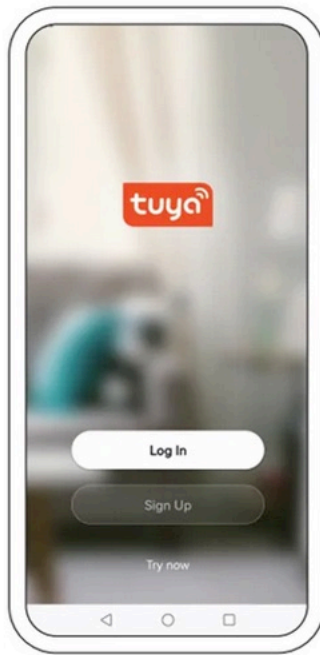


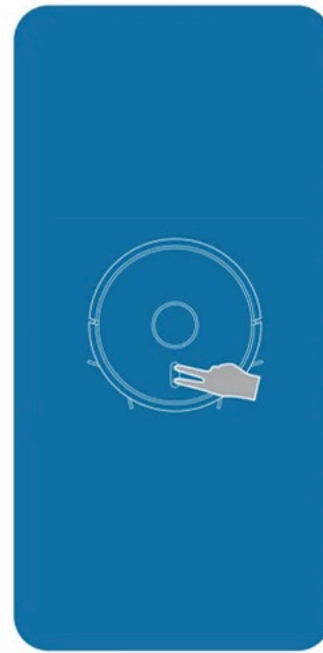
Note: The APP only works with the robots with Wi-Fi function. Please turn on the robot before using the APP. It is necessary to connect the Wi-Fi for operating the APP. Before initiating the connection, ensure the unit is standby mode. If fails to connect to the Wi-Fi network, probably because your Wi-Fi is 5GHz, please refer to "Common router setting method" to set it to be 2.4GHz.



1 Scan the QR code or search "Tuya Smart" from APP store to download the APP.



2 For new users, register a new account. For existing users, log into the APP.



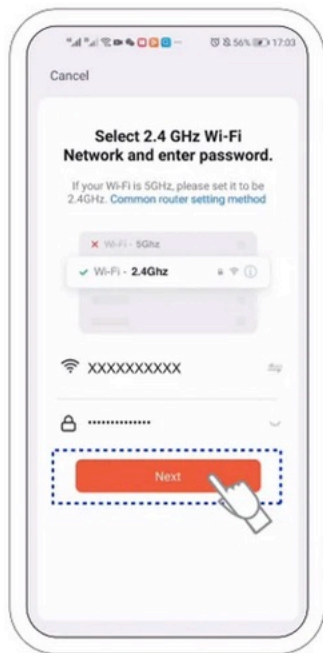
3 Press the Home and the ON button simultaneously for more than 3s until the robot starts flashing and voice prompt. Ensure your phone and the robot are connected to the same Wi-Fi.



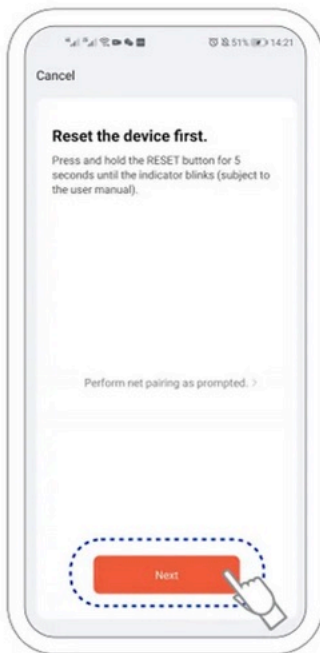
4 Click [Add device] or press [+] to add the device.



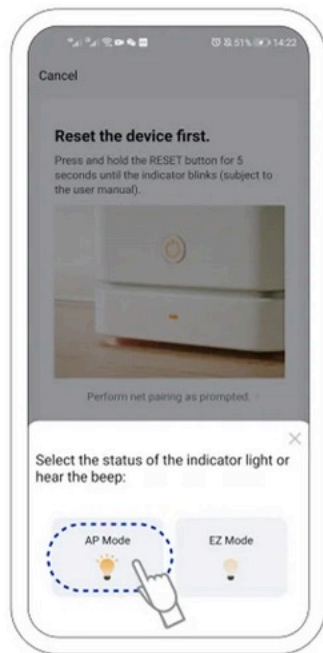
5 Select the type of device as "Robot Vacuum (Wi-Fi)".



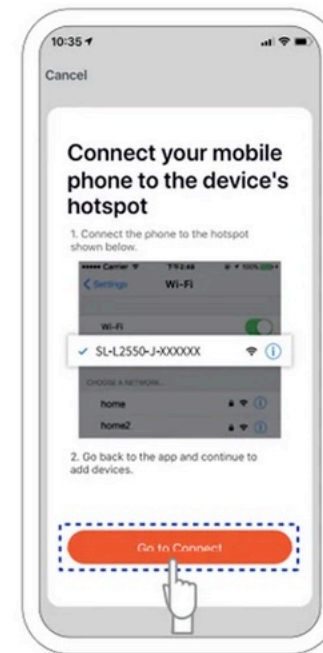
6 Enter your Wi-Fi password and confirm. Kindly remind that 5GHz is not available.



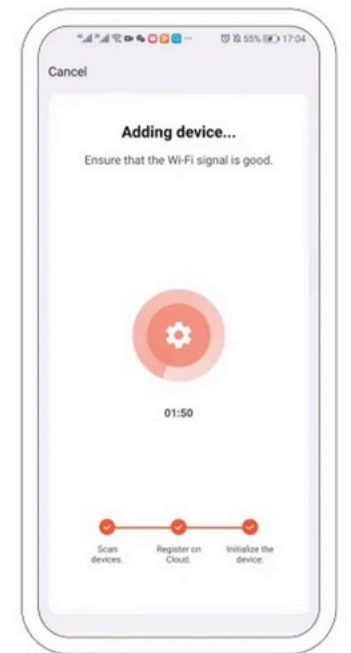
7 Press on [Next].



8 Select "AP Mode".



9 Press on [go to connect] to conform.



10 Adding devices, Ensure that Wi-Fi signal is good.